

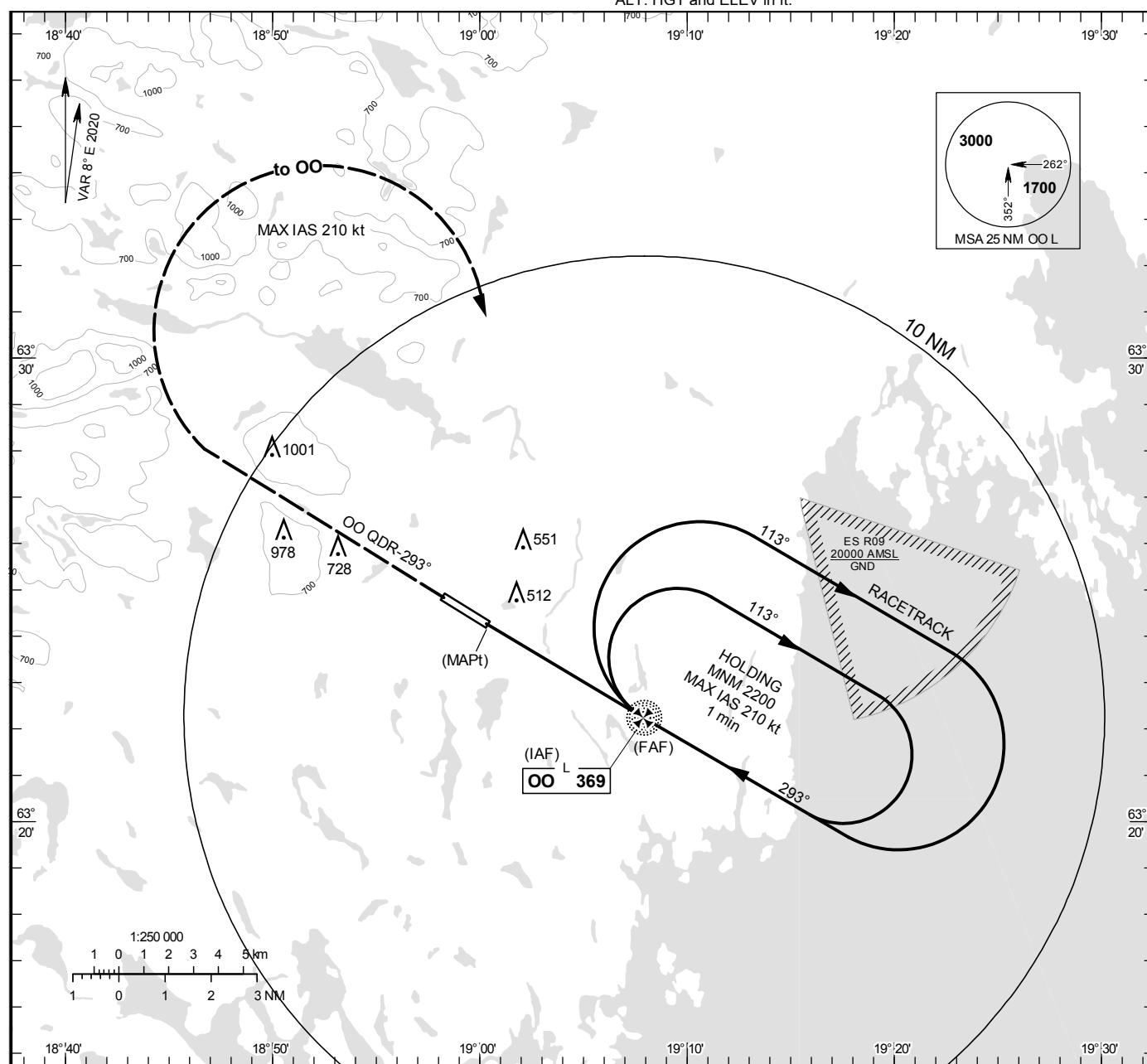
**NDB RWY 30**

## ÖVIK TOWER

122.255

ALT. HGT and ELEV in ft.

# INSTRUMENT APPROACH CHART – ICAO

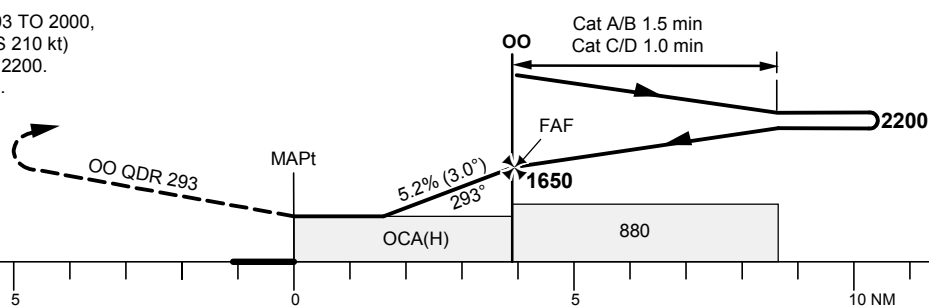


TA 5000 ft AMSL

Final approach line offset 1°

Missed approach turn limited to MAX IAS 210 kt

CLIMB ON OO QDR-293 TO 2000,  
TURN RIGHT (MAX IAS 210 kt)  
TO OO, CLIMBING TO 2200.  
JOIN HOLDING AT OO.



OCA (H)					Final approach	Distance FAF-MAPt 4.0 NM						
Cat of ACFT	A	B	C	D	DME OSK NM	4			3		2	
Straight-in Approach	760(430)				ALT	1540			1230		910	
Circling	850(500)	1030(680)	1380(1030)	1400(1050)	GS	kt	80	100	120	140	160	180
					Time	min:s	3:00	2:24	2:00	1:43	1:30	1:20
					Rate of descent	ft/min	420	525	630	735	845	950

CHANGE: Editorial